



**MATCH
ESTATES**

FIND YOUR
MATCH

Eastcliffe Heights, Radnor Bridge Road, Folkestone, Kent

Guide Price £130,000

1 1 1



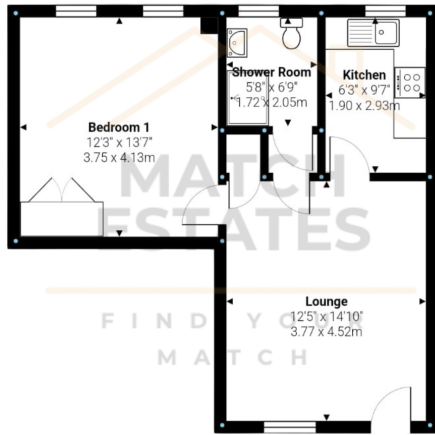
Discover the perfect blend of seaside charm and modern convenience with this stylish one-bedroom apartment at Eastcliffe Heights, Folkestone. With its own private entrance, this home welcomes you into a spacious living and dining area, perfect for unwinding after a day by the sea or hosting intimate dinners with friends. The generously sized kitchen at the rear of the apartment offers all the space you need for creating delicious meals, while still being connected to the heart of the home.

One of the standout features is the private hallway leading to a newly refurbished shower room, offering a serene retreat separate from the main living space. The large bedroom provides peaceful sanctuary with fitted wardrobes and partial sea views – imagine waking up to the distant sound of waves.

Eastcliffe Heights is ideally located just moments from Folkestone Harbour, with its vibrant mix of cafes, restaurants, and coastal walks. Enjoy leisurely strolls by the water, and return to the comfort of this welcoming apartment. Parking is made easy with permit on-road or off-road residents' parking available on a first-come, first-serve basis, and residents can take advantage of additional storage.

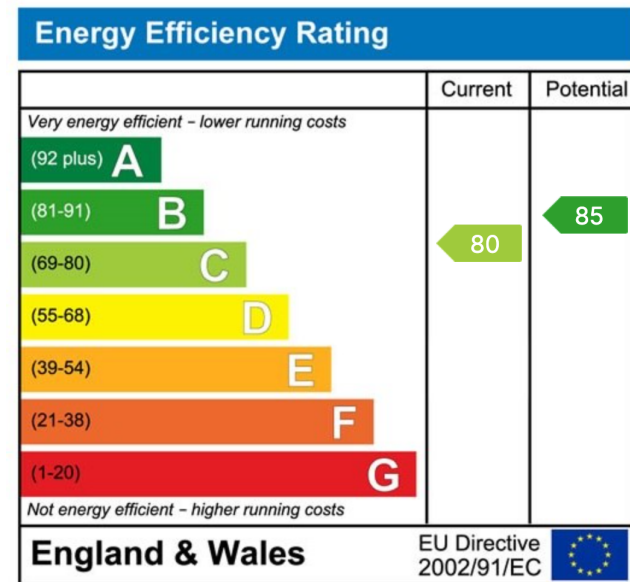
This apartment isn't just a home, it's a lifestyle—perfect for those who want to embrace the best of coastal living while staying connected to the vibrant atmosphere of Folkestone.





Measurements are approximate and for display purposes only

- Partial Seaviews
- Large Living Space
- Modern Shower Room
- Off-Road Parking
- Separate Entrance
- Close To Folkestone Harbour
- Double Bedroom
- Fitted Wardrobes



01303 475085

Match Estates LTD, trading as Match Estates, is a private limited company: 15509408
 Registered Address: B3 Bouverie House, Folkestone, Kent, CT20 1AE
 VAT Registration Number: 464 1921 89

www.match-estates.co.uk

